



# FOOTWEAR COLLECTION

SS 2023

LIVE THE MOMENT







INDEX

FIT MANIFESTO . . . . .	04
<b>APPROACH</b>	
SULFUR . . . . .	06
FIND YOUR ELEMENT . . . . .	20
<b>ALL MOUNTAIN</b>	
MAGMA . . . . .	22
FIND YOUR ELEMENT . . . . .	34
<b>TREKKING</b>	
FORGE . . . . .	36
FIND YOUR ELEMENT . . . . .	42
<b>HIKING</b>	
PLASMA . . . . .	44
<b>CLASSIC COLLECTION</b>	
KILIMANJARO . . . . .	50
MAKALU . . . . .	52
MAKALU JR . . . . .	54
POP SOLUTIONS . . . . .	56





## WHY?

**WE BELIEVE  
THAT PRODUCTS MUST  
ADAPT TO PEOPLE**

EACH PERSON IS DIFFERENT.  
WE DESIGN PRODUCTS THAT ADAPT TO FIT  
EVERY TYPE OF FOOT SHAPE.

## HOW?

**WE COMBINE  
ULTIMATE COMFORT  
AND UNCOMPROMISED  
PERFORMANCE**

## ANATOMICAL LAST

Tecnica's shoe design process starts from an anatomical last, rather than a traditional one.

Anatomical Last



**VS**

Traditional Last



## GREAT FIT OUT OF THE BOX

Many shoe brands in the market use traditional lasts to develop their footwear models, in this way they save time and investments.

At Tecnica however, we have always made **fit** a top priority. We do not accept compromises in the development and production process.

This approach makes it possible to design and produce shoes with a unique anatomical shape that delivers a precise wrapping fit, with great heel and forefoot retention.

# SULFUR

THE SULFUR IS A FAST-MOVING APPROACH SHOE WITH AN ANATOMICAL, WRAPPING FIT AND GOOD SUPPORT AND ENDURANCE COMFORT. IT DELIVERS GRIP, PRECISION AND CLIMBING PERFORMANCE IN TECHNICAL TERRAIN.



## CLIMBING PRECISION



### ADAPTIVE SHAPE TECHNOLOGY

BUILT AROUND YOUR FOOT

Each foot is unique, this is a fact. Tecnica AST (Adaptive Shape Technology) combines a range of advanced technical solutions. By combining different density adaptive EVA memory foams with pre-shaped thermoplastic inserts and an Ortholite footbed, we deliver a unique, anatomic underfoot construction that adapts to the shape of your foot.

### GREAT FIT OUT OF THE BOX

ANATOMICAL LAST

The Sulfur upper is built and shaped around a specific anatomical last that delivers a precise, wrapping fit. As a result, the shoe fits like a glove around the foot. Its excellent forefoot and heel retention provide solid support for high performance in even the most technical terrain.



### TOE LACING SYSTEM

FOR ADJUSTABLE FIT, PRECISION AND PERFORMANCE

The climbing lacing system supports the wrapping fit at the forefoot and toe box and allows for extremely quick and precise lace adjustment.

In addition, it enhances the advanced level of precision and edging when climbing steeper rock.



SUPPORTIVE MIDSOLE STRUCTURE

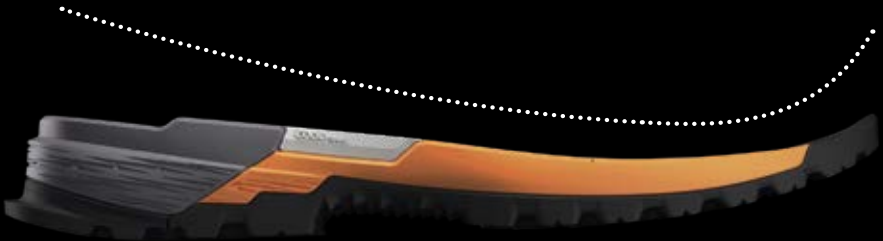
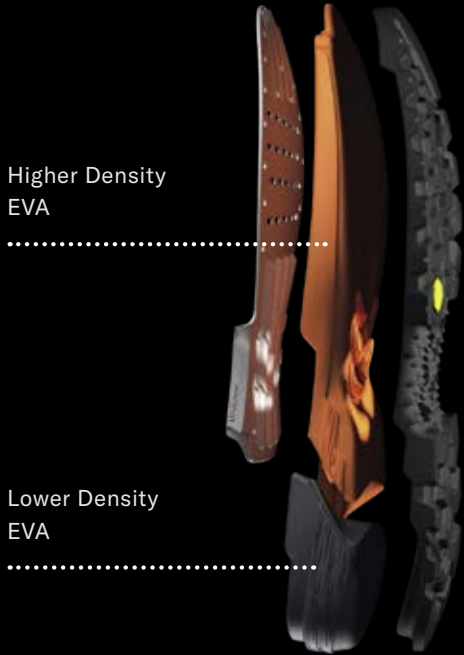


**EDGE FRAME TECHNOLOGY**  
SUPPORT AND FLEX – EXACTLY WHERE YOU NEED IT  
The Edge Frame plate is made of thermoplastic polyurethane (TPU) and we insert it at the core of the shoe, to provide stiffness and support while climbing, while still allowing the shoe to flex freely where needed.  
The result: climbing performance meets hiking comfort. The longitudinal elements promote stiffness and torsional rigidity at the toe and midfoot. The cut-out crossways arrangements allow for more flexion in the metatarsal area.



**BALANCED CUSHION**  
The midsole is specifically designed with two different densities.  
At the heel, it uses a softer EVA compound – to provide greater cushioning and ground adaptability. This guarantees optimal comfort when walking.

**DUAL-DENSITY SUPPORT**  
BI-DENSITY COMPRESSION MOLDED EVA  
The Sulfur midsole is specifically designed with two different density areas: a higher density area from the midfoot to the toe and a lower density area underneath the heel.  
The higher density EVA ensures torsional rigidity and flex stability – adding further support to the Edge Frame technology.



**FAST TRANSITION**  
The midsole and outsole rocker profile is built with a precisely-defined shape to promote smoother heel-to-toe transition. As a result, you can go for longer distances with a higher level of comfort.

PRECISE GRIP



**CLIMBING GRIP**  
VIBRAM® MEGAGRIP™ SOLE

The Vibram® Megagrip™ outsole offers unparalleled grip on both dry and wet surfaces. This compound is best-in-class for durability and ground adaptation. The multi-directional lug pattern is ready to take on different terrains and changing conditions.



**CLIMBING ZONE**  
At the toe, the Sulfur outsole has a flat climbing zone. This dedicated climbing-specific feature gives advanced precision, toe and edging power on slabs, ledges and edges, making it the perfect choice for steeper walls.



**ARCH GRIP**  
At the center of the Vibram® outsole, under the arch of the foot is the rubber arch grip. It delivers additional technical performance to the shoe.  
The specific shape of its ‘teeth’ ensures better grip on slippery ridges and raised edges, as well as via ferrata rungs and ladders.

TECHNICAL FEATURES



**LIGHTWEIGHT RUBBER RAND**  
EXTENDED FRONT AND SIDE PROTECTION  
At the toes and lateral and medial side of the foot, a lightweight rubber rand provides additional protection and abrasion resistance from boulders, rocks and scree.



**BACKLOOP**  
EASY PULL-ON AND HARNESS ATTACHMENT  
The Sulfur features a robust backloop that helps to pull on your shoes.  
It also enables quick and secure attachment at the back of your harness.



**WATERPROOFNESS AND BREATHABILITY**  
GORE-TEX®  
We use proven upper materials to deliver durably waterproof and breathable weather protection. The Gore-Tex® extended comfort membrane ensures that your feet stay dry and comfortable all day long and all year round.



SULFUR MEN'S



**SULFUR MS**  
SOFT GREY - ULTRA ORANGE  
COD.: 112505 00 001

• • • •

**Upper:** 1,5 mm suede leather  
**Lining:** Sock lining construction in soft mesh  
**Footbed:** Anatomical, Ortholite®  
**Midsole:** Bi-density compression molded EVA with high rebound compound

**Outsole:** Vibram® Megagrip™  
**Weight:** 400 g (8 UK / 9 US)  
**Sizes:** UK 6 - 13,5 / US 7 - 14,5

SULFUR WOMEN'S



**SULFUR WS**  
LIGHT GREY - LIGHT LILAC  
COD.: 212505 00 001

• • • •

**Upper:** 1,5 mm suede leather  
**Lining:** Sock lining construction in soft mesh  
**Footbed:** Anatomical, Ortholite®  
**Midsole:** Bi-density compression molded EVA with high rebound compound

**Outsole:** Vibram® Megagrip™  
**Weight:** 340 g (5 UK / 7 US)  
**Sizes:** UK 3,5 - 8,5 / US 5,5 - 10,5

**SULFUR GTX® MEN'S**



**SULFUR GTX® MS**  
ANTHRACITE - ULTRA ORANGE  
COD.: 112506 00 001

**SULFUR GTX® MS**  
DEEP GREY - BLUE GREY  
COD.: 112506 00 002

• • • •

**Upper:** 1,5 mm WR suede leather  
**Lining:** Gore-Tex® Extended Comfort  
**Footbed:** Anatomical, Ortholite®  
**Midsole:** Bi-density compression molded EVA with high rebound compound

**Outsole:** Vibram® Megagrip™  
**Weight:** 420 g (8 UK / 9 US)  
**Sizes:** UK 6 - 13,5 / US 7 - 14,5

**SULFUR GTX® WOMEN'S**



**SULFUR GTX® WS**  
PROGRESSIVE BLUE - BLUE GREY  
COD.: 212506 00 001

**SULFUR GTX® WS**  
GREY - LIGHT PETROL  
COD.: 212506 00 002

• • • •

**Upper:** 1,5 mm WR suede leather  
**Lining:** Gore-Tex® Extended Comfort  
**Footbed:** Anatomical, Ortholite®  
**Midsole:** Bi-density compression molded EVA with high rebound compound

**Outsole:** Vibram® Megagrip™  
**Weight:** 360 g (5 UK / 7 US)  
**Sizes:** UK 3,5 - 8,5 / US 5,5 - 10,5



**SULFUR S GTX® MEN'S**



**SULFUR S GTX® MS**  
DARK OLIVE - BURNT ORANGE  
COD.: 112507 00 001



**SULFUR S GTX® MS**  
SPORT GREY - DARK OLIVE  
COD.: 112507 00 002



**SULFUR S GTX® MS**  
GRAPHITE - GREEN  
COD.: 112507 00 003

• • • •

**Upper:** WR synthetic ballistic material  
**Lining:** Gore-Tex® Extended Comfort  
**Footbed:** Anatomical, Ortholite®  
**Midsole:** Bi-density compression molded EVA with high rebound compound

**Outsole:** Vibram® Megagrip™  
**Weight:** 385 g (8 UK / 9 US)  
**Sizes:** UK 6 - 13,5 / US 7 - 14,5

**SULFUR S GTX® WOMEN'S**



**SULFUR S GTX® WS**  
PROGRESSIVE BLUE - SOFT GREY  
COD.: 212507 00 001



**SULFUR S GTX® WS**  
DEEP GREY - LIGHT PETROL  
COD.: 212507 00 002



**SULFUR S GTX® WS**  
DARK OLIVE - WINE BORDEAUX  
COD.: 212507 00 003

• • • •

**Upper:** WR synthetic ballistic material  
**Lining:** Gore-Tex® Extended Comfort  
**Footbed:** Anatomical, Ortholite®  
**Midsole:** Bi-density compression molded EVA with high rebound compound

**Outsole:** Vibram® Megagrip™  
**Weight:** 335 g (5 UK / 7 US)  
**Sizes:** UK 3,5 - 8,5 / US 5,5 - 10,5

SULFUR S MEN’S

SULFUR S WOMEN’S



**SULFUR S MS**  
GRAPHITE - BURNT ORANGE  
COD.: 112508 00 001



**SULFUR S MS**  
TURNED GREY - GREEN  
COD.: 112508 00 002



**SULFUR S MS**  
INK BLUE - DARK SAND  
COD.: 112508 00 003

• • • •

**Upper:** Synthetic ballistic material  
**Lining:** Sock lining construction in soft mesh  
**Footbed:** Anatomical, Ortholite®  
**Midsole:** Bi-density compression molded EVA with high rebound compound

**Outsole:** Vibram® Megagrip™  
**Weight:** 375 g (8 UK / 9 US)  
**Sizes:** UK 6 – 13,5 / US 7 – 14,5



**SULFUR S WS**  
DEEP GREY - DARK FUCHSIA  
COD.: 212508 00 001



**SULFUR S WS**  
ROSED GREY - WINE BORDEAUX  
COD.: 212508 00 002



**SULFUR S WS**  
PETROL - LIGHT PETROL  
COD.: 212508 00 003

• • • •

**Upper:** Synthetic ballistic material  
**Lining:** Sock lining construction in soft mesh  
**Footbed:** Anatomical, Ortholite®  
**Midsole:** Bi-density compression molded EVA with high rebound compound

**Outsole:** Vibram® Megagrip™  
**Weight:** 325 g (5 UK / 7 US)  
**Sizes:** UK 3,5 – 8,5 / US 5,5 – 10,5



# FIND YOUR ELEMENT

TWO YEARS THAT CHANGED THE WORLD, AND US ALONG WITH IT. THE STATE OF ISOLATION THAT WE WERE FORCED INTO BECAUSE OF THE PANDEMIC HAD A PROFOUND IMPACT ON OUR LIVES AND OUR OUTLOOK. WE SUDDENLY FELT LESS FREE TO IMAGINE AND DREAM, WE WERE LESS FREE TO TRAVEL AND EXPLORE THE WORLD.

AFTER TWO YEARS, THE EASING OF RESTRICTIONS FINALLY MEANT A MOMENT OF NEWFOUND FREEDOM, AS WELL AS AN OPPORTUNITY TO REDISCOVER OURSELVES. THIS IS WHAT LED US TO EMBARK UPON THIS JOURNEY WITH THE ELEMENTS, BUT ABOVE ALL, WITH OURSELVES.



We start exploring the south, in the area of the Jandia Natural Park. From the Mirador de Cofete we climb back up north to reach the Degollada de Cofete. Looking to the west, the contrast between the colours of the ocean and the coast is remarkable.

We walk in environments where the elements of nature unleash their full force. The northernmost viewpoint is battered by strong winds, and clouds gather on the ridge, suggesting that we descend to the valley and head further north.

The scenery is impressive and the colours of the terrain are reminiscent of landscapes in sci-fi films about life on Mars. In general, the landscape that the Natural Monument of the Mountain of Cardon boasts has little in the way of colour contrasts, but is incredibly beautiful in its geomorphological forms.

We treat ourselves to a day of kite surfing before exploring one of the most famous places on the island, Arco de Las Peñitas. The path to reach the arch, which is located at one of the summits of Barranco de Las Peñitas, is steep and not signposted, the temperature is very high and it takes a lot of effort to reach the summit. After about an hour we finally reach the arch: a true natural work of art. The wind and sand have sculpted the stone over the centuries. This orange-red arch contrasting with the blue sky is an image to remember.

Photos by Lorenzo Alesi and Alice Linari  
Text by Lorenzo Alesi



We're travelling beyond the mainland once more, and the Canary Islands is our destination.

We don't like the idea of taking flights for our trips, and we have virtually stopped travelling this way, but when it's necessary, to go to another landmass, we take action to offset CO2 emissions by supporting projects aimed at protecting the environment.

**FUERTEVENTURA WITH ITS MOUNTAINS AND VOLCANOES IS AN EXTREMELY STRIKING PLACE.**



As planned, we spend the last few days in the north of the island. Our destination is Caledron Hondo. Climbing to the summit is a unique experience, and in the area there are several other volcanoes, around 50,000 years old. At the highest part of the crater, around 280 metres up, the view of the other volcanoes is really something.

The igneous rock provides an idea of just how much force was released from the earth during the eruptions that created these conical structures that today offer an unparalleled natural landscape.

It is time to return to the mainland, and we are delighted with such an intense experience in an environment that is unusual for us, with temperatures that have been very high at times, rugged terrain, orange-red colours, and no vegetation - a unique experience.





# MAGMA 2.0

MAGMA IS DESIGNED TO HIKE, RUN AND SCRAMBLE IN ALL TYPES OF TECHNICAL MOUNTAIN TERRAIN. IT DELIVERS A NEW LEVEL OF GRIP AND PROTECTION IN A LIGHTWEIGHT, COMFORTABLE SHOE.

- PERFECT INDIVIDUAL FIT
- ALL TERRAIN GRIP AND PROTECTION
- DOWNHILL PERFORMANCE AND SHOCK ABSORPTION



## MAGMA 2.0 GTX® MEN'S



**MAGMA 2.0 GTX® MS**  
DARK PIEDRA - TRUE LAVA  
COD.: 112511 00 001



**MAGMA 2.0 GTX® MS**  
NIGHT TIERRA - DUSTY STEPPA  
COD.: 112511 00 002



**MAGMA 2.0 GTX® MS**  
SHADOW GIUNGLA - PALE GIUNGLA  
COD.: 112511 00 003

• • • •

**Upper:** 1,6 mm WR suede leather with liquid rubber reinforcement  
**Lining:** Gore-Tex® Extended Comfort  
**Footbed:** Anatomical, Ortholite®  
**Midsole:** Compression molded EVA with high rebound compound + ESS insert plate

**Outsole:** Vibram® Megagrip™ Litebase™ XO SHIELD  
**Drop:** 8 mm  
**Weight:** 340 g (8 UK / 9 US)  
**Sizes:** UK 6 - 13,5 / US 7 - 14,5



MAGMA 2.0 GTX® WOMEN'S



**MAGMA 2.0 GTX® WS**  
SHADOW PIEDRA - MIDWAY BACCA  
COD.: 212511 00 001



**MAGMA 2.0 GTX® WS**  
CALM ALTURA - PURE FIORI  
COD.: 212511 00 002

• • • •

**Upper:** 1,6 mm WR suede leather with liquid rubber reinforcement  
**Lining:** Gore-Tex® Extended Comfort  
**Footbed:** Anatomical, Ortholite®  
**Midsole:** Compression molded EVA with high rebound compound + ESS insert plate

**Outsole:** Vibram® Megagrip™ Litebase™ XO SHIELD  
**Drop:** 8 mm  
**Weight:** 290 g (5 UK / 7 US)  
**Sizes:** UK 3,5 – 8,5 / US 5,5 – 10,5





MAGMA 2.0 S GTX® MEN'S



**MAGMA 2.0 S GTX® MS**  
BLACK - DUSTY LAVA  
COD.: 112513 00 001



**MAGMA 2.0 S GTX® MS**  
SOMBER LATERITE - RICH LATERITE  
COD.: 112513 00 005



**MAGMA 2.0 S GTX® MS**  
CAMP GREEN - DARK GREY  
COD.: 112513 00 007

• • • •

**Upper:** Hydrophobic polyamide mesh  
**Lining:** Gore-Tex® Extended Comfort  
**Footbed:** Anatomical, Ortholite®  
**Midsole:** Compression molded EVA with high rebound compound + ESS insert plate

**Outsole:** Vibram® Megagrip™ Litebase™ XO SHIELD  
**Drop:** 8 mm  
**Weight:** 320 g (8 UK / 9 US)  
**Sizes:** UK 6 - 13,5 / US 7 - 14,5

MAGMA 2.0 S GTX® WOMEN'S



**MAGMA 2.0 S GTX® WS**  
BLACK - FRESH BACCA  
COD.: 212513 00 001



**MAGMA 2.0 S GTX® WS**  
DEEP BACCA - PURE BACCA  
COD.: 212513 00 002



**MAGMA 2.0 S GTX® WS**  
LIGHT PETROL - OFF WHITE  
COD.: 212513 00 007

• • • •

**Upper:** Hydrophobic polyamide mesh  
**Lining:** Gore-Tex® Extended Comfort  
**Footbed:** Anatomical, Ortholite®  
**Midsole:** Compression molded EVA with high rebound compound + ESS insert plate

**Outsole:** Vibram® Megagrip™ Litebase™ XO SHIELD  
**Drop:** 8 mm  
**Weight:** 280 g (5 UK / 7 US)  
**Sizes:** UK 3,5 - 8,5 / US 5,5 - 10,5



MAGMA 2.0 S MEN'S



**MAGMA 2.0 S MS**  
MIDWAY ALTURA - PURE LAVA  
COD.: 112515 00 001



**MAGMA 2.0 S MS**  
RICH LAVA - BLACK  
COD.: 112515 00 002



**MAGMA 2.0 S MS**  
DEEP BLUE - LIME GREEN  
COD.: 112515 00 004

• • • •

**Upper:** Breathable 3D mesh  
**Lining:** Soft mesh lycra  
**Footbed:** Anatomical, Ortholite®  
**Midsole:** Compression molded EVA with high rebound compound + ESS insert plate

**Outsole:** Vibram® Megagrip™ Litebase™ XO SHIELD  
**Drop:** 8 mm  
**Weight:** 310 g (8 UK / 9 US)  
**Sizes:** UK 6 – 13,5 / US 7 – 14,5

MAGMA 2.0 S WOMEN'S



**MAGMA 2.0 S WS**  
CALM LICHENE - LIGHT BACCA  
COD.: 212515 00 002



**MAGMA 2.0 S WS**  
DEEP MARE - SOMBER MARE  
COD.: 212515 00 004



**MAGMA 2.0 S WS**  
ROSED GREY - WINE BORDEAUX  
COD.: 212515 00 005

• • • •

**Upper:** Breathable 3D mesh  
**Lining:** Soft mesh lycra  
**Footbed:** Anatomical, Ortholite®  
**Midsole:** Compression molded EVA with high rebound compound + ESS insert plate

**Outsole:** Vibram® Megagrip™ Litebase™ XO SHIELD  
**Drop:** 8 mm  
**Weight:** 270 g (5 UK / 7 US)  
**Sizes:** UK 3,5 – 8,5 / US 5,5 – 10,5

MAGMA 2.0 MID GTX® MEN'S

MAGMA 2.0 MID GTX® WOMEN'S



MAGMA 2.0 MID GTX® MS  
DARK PIEDRA - DUSTY STEPPA  
COD.: 112512 00 001

MAGMA 2.0 MID GTX® MS  
DARK SAVANA - MIDWAY FIENO  
COD.: 112512 00 002

MAGMA 2.0 MID GTX® MS  
SOFT GREY - BLACK  
COD.: 112512 00 004

MAGMA 2.0 MID GTX® WS  
SHADOW PIEDRA - RICH LAGUNA  
COD.: 212512 00 001

MAGMA 2.0 MID GTX® WS  
NIGHT TIERRA - DEEP BACCA  
COD.: 212512 00 002

MAGMA 2.0 MID GTX® WS  
LIGHT GREY - RED  
COD.: 212512 00 004

• • • •

**Upper:** 1,6 mm WR suede leather with liquid rubber reinforcement  
**Lining:** Gore-Tex® Extended Comfort  
**Footbed:** Anatomical, Ortholite®  
**Midssole:** Compression molded EVA with high rebound compound + ESS insert plate

**Outsole:** Vibram® Megagrip™ Litebase™ XO SHIELD  
**Drop:** 8 mm  
**Weight:** 410 g (8 UK / 9 US)  
**Sizes:** UK 6 – 13,5 / US 7 – 14,5

• • • •

**Upper:** 1,6 mm WR suede leather with liquid rubber reinforcement  
**Lining:** Gore-Tex® Extended Comfort  
**Footbed:** Anatomical, Ortholite®  
**Midssole:** Compression molded EVA with high rebound compound + ESS insert plate

**Outsole:** Vibram® Megagrip™ Litebase™ XO SHIELD  
**Drop:** 8 mm  
**Weight:** 345 g (5 UK / 7 US)  
**Sizes:** UK 3,5 – 8,5 / US 5,5 – 10,5



MAGMA 2.0 S MID GTX® MEN'S



MAGMA 2.0 S MID GTX® MS  
BLACK - PURE LAVA  
COD.: 112514 00 002



MAGMA 2.0 S MID GTX® MS  
NIGHT GIUNGLA - DUSTY LAVA  
COD.: 112514 00 004



MAGMA 2.0 S MID GTX® MS  
TURNED GREY - GREEN  
COD.: 112514 00 005

• • • •

**Upper:** Hydrophobic polyamide mesh  
**Lining:** Gore-Tex® Extended Comfort  
**Footbed:** Anatomical, Ortholite®  
**Midsole:** Compression molded EVA with high rebound compound + ESS insert plate

**Outsole:** Vibram® Megagrip™ Litebase™ XO SHIELD  
**Drop:** 8 mm  
**Weight:** 370 g (8 UK / 9 US)  
**Sizes:** UK 6 – 13,5 / US 7 – 14,5

MAGMA 2.0 S MID GTX® WOMEN'S



MAGMA 2.0 S MID GTX® WS  
BLACK - MIDWAY BACCA  
COD.: 212514 00 002



MAGMA 2.0 S MID GTX® WS  
SHADOW PIEDRA - CLOUDY BACCA  
COD.: 212514 00 003



MAGMA 2.0 S MID GTX® WS  
BLUE GREY - LIGHT BLUENESS  
COD.: 212514 00 005

• • • •

**Upper:** Hydrophobic polyamide mesh  
**Lining:** Gore-Tex® Extended Comfort  
**Footbed:** Anatomical, Ortholite®  
**Midsole:** Compression molded EVA with high rebound compound + ESS insert plate

**Outsole:** Vibram® Megagrip™ Litebase™ XO SHIELD  
**Drop:** 8 mm  
**Weight:** 320 g (5 UK / 7 US)  
**Sizes:** UK 3,5 – 8,5 / US 5,5 – 10,5



# FIND YOUR ELEMENT



Photos by Lorenzo Alesi and Alice Linari  
Text by Lorenzo Alesi



Gorner Glacier, Swiss Alps.  
Climbing up the left-hand side of the 14km long glacier is a bit like being in a timeless space.  
To the south, Breithorn, Pollux, Castor, Lyskamm and Monte Rosa frame it in one of the most beautiful landscapes in the Alps. From Rotenboden, which you can get to with the Gornergrat train, to the Monte Rosa Hut, the trail initially descends gently towards the bed of the glacier. Viewing these 4000 m peaks from below, the peaks that tower above the glacial strip, the peaks that we often ski down, it has a certain effect.

**THOSE IMMENSE MASSES OF CONTINUOUSLY MOVING ICE PROVIDE A SENSE OF BELONGING AND A FEELING OF FRAGILITY AT THE SAME TIME.**

Having almost reached the bed of the glacier, we begin climbing back up to the Monte Rosa Hut which doesn't take long once we've tackled some sections on fixed ropes and wooden walkways. From here the view is breathtaking. It spans from Monte Rosa to the Gornergrat and the Matterhorn.



The crevasses that mark the bed of the glacier seem to almost make it breathe, making it seem more alive and moving than it already is. The streams that flow through it and the various small lakes that form really give the impression that the ice is melting.  
We stay another few minutes and then it's time to go back, to follow those streams because water, in its various forms, is the element of our first stage and from the glaciers we're now moving on to the lakes, one in particular.



Leaving Zermatt, we head towards one of the Alpine lakes that we're most intrigued by: Lake Oeschinen. This is an incredible place, a UNESCO World Heritage Site, an intact Alpine lake fed by glacial streams, perhaps the most beautiful mountain lake we've ever seen. Surrounded by 3000m peaks such as Blüemlisalp, Oeschinenhorn, Fründenhorn and Doldenhorn that are submerged straight into the water and give the lake an incredible look.  
  
A unique place, where the element of water certainly finds its perfect incarnation for us.



# FORGE 2.0

THE FORGE 2.0 IS A MODERN LEATHER TREKKING BOOT WITH A WATERPROOF, BREATHABLE GORE-TEX® MEMBRANE AND ANATOMIC FIT. DESIGNED TO PROVIDE VERSATILE DURABLE SUPPORT, COMFORT AND PROTECTION, INCLUDING IN TECHNICAL TERRAINS.



## COMFORTABLE SUPPORT AND VERSATILITY



### SUPPORT AND VERSATILITY

#### LASTING BOARD AND ESS ROCK PLATE

Sitting on top of the outsole and midsole, the Forge features a polypropylene lasting board that increases stiffness and provides greater support in more technical terrain.

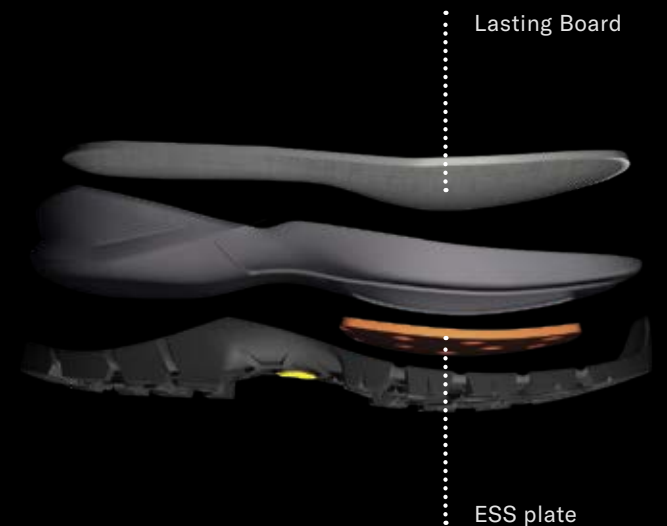
The midsole, made of compressed EVA, benefits from an additional ESS rock plate for protection at the forefoot.

### GREAT FIT OUT OF THE BOX

#### ANATOMICAL LAST

Trekking in mountain areas involves covering long distances over rugged terrain. This requires versatile footwear that offers comfortable support, protection and durability.

The Forge's upper is built and shaped around an anatomical last, in order to deliver a precise, comfortable fit. It holds the forefoot and heel firmly in place to provide more versatile performance in technical terrain.



### CLASSICAL TONGUE CONSTRUCTION

#### EASY STEP-IN & HIKING COMFORT

The classic tongue and lacing construction is designed to allow an easier step-in, as well as a better forward-back range of motion for the ankle while walking. This is particularly effective on long mountain descents.

VERSATILE GRIP



**GRIP**  
VIBRAM® XS TREK EVO™ SOLE  
The Forge 2.0 is equipped with a best-in-class Vibram® XS Trek EVO™ outsole for outstanding grip on a range of wet and dry surfaces in variable conditions.  
Its dedicated lug pattern ensures multi-directional braking and traction.

TECHNICAL FEATURES



**NUBUCK LEATHER**  
COMFORT AND PROTECTION  
The upper of Forge 2.0 is made of high-quality 1.9 mm thick leather, which naturally adapts to the shape of the foot and offers good breathability.  
Simultaneously, nubuck leather is extremely hardwearing and ensures high resistance to scratches.

EXTERNAL LUGS



INTERNAL LUGS



**LIGHTWEIGHT RUBBER RAND**  
EXTENDED PROTECTION AT TOE AND SIDES  
The toes and lateral and medial side of the foot are fully protected by a light rubber rand that adds further protection and abrasion resistance against rocks and scree.



SEMI-APPROACH AREA



INTERNAL HOLES



**WATERPROOFNESS AND BREATHABILITY**  
GORE-TEX®  
The Gore-Tex® extended comfort membrane delivers durably waterproof and breathable weather protection to ensure that your feet stay dry and comfortable all day long and all year round.



FORGE 2.0 GTX® MEN'S



**FORGE 2.0 GTX® MS**  
DEEP GREY - ULTRA ORANGE  
COD.: 112509 00 001



**FORGE 2.0 GTX® MS**  
TUNDRA - COOL GREY  
COD.: 112509 00 002



**FORGE 2.0 GTX® MS**  
TURNED GREY - GREEN  
COD.: 112509 00 003

• • • •

**Upper:** 1,9 mm WR nubuk leather  
**Lining:** Gore-Tex® Extended Comfort  
**Footbed:** Premolded EVA footbed  
**Midssole:** Compressed EVA with additional lasting board + ESS insert plate

**Outsole:** Vibram® XS TREK EVO™  
**Weight:** 630 g (8 UK / 9 US)  
**Sizes:** UK 6 – 13,5 / US 7 – 14,5

FORGE 2.0 GTX® WOMEN'S



**FORGE 2.0 GTX® WS**  
DEEP GREY - DARK FUCHSIA  
COD.: 212509 00 001



**FORGE 2.0 GTX® WS**  
SOFT GREY - LIGHT PETROL  
COD.: 212509 00 002



**FORGE 2.0 GTX® WS**  
DARK AVIO - LIGHT BLUENESS  
COD.: 212509 00 003

• • • •

**Upper:** 1,9 mm WR nubuk leather  
**Lining:** Gore-Tex® Extended Comfort  
**Footbed:** Premolded EVA footbed  
**Midssole:** Compressed EVA with additional lasting board + ESS insert plate

**Outsole:** Vibram® XS TREK EVO™  
**Weight:** 550 g (5 UK / 7 US)  
**Sizes:** UK 3,5 – 8,5 / US 5,5 – 10,5



# FIND YOUR ELEMENT

Photos by Lorenzo Alesi and Alice Linari  
Text by Lorenzo Alesi



It's been a while since we've been on a hike in the eastern part of the Sibillini mountains. These are the mountains local to us, but they never cease to amaze us with their beauty and their colours. The idea is to cross the entire range, this time from Monte Sibilla, south to Monte Vettore, then Forca di Presta and Pian Grande.



From the Rifugio Sibilla lodge, which is still closed since the earthquake in 2016, after reaching the pass of Monte Zampa, we begin crossing the ridge with an unrivalled view. To the east there is a view of the Adriatic Sea, and the peaks of the Sibillini mountains to the south, appearing one after another in a natural show of the route we must take. This is definitely the route where the wind whistles the most. Always at altitude, always on steep ridges, to reach Monte Porche.

## THE TRAIL BECOMES EASIER WHEN WE CROSS THE PALAZZO BORGHESI AREA TO REACH MONTE ARGENTELLA.

From here, the view over the valley of Lake Pilato makes us reflect on how different this area would have been millions of years ago. The glacial valley of Lake Pilato only has a few snowfields in the summer, in the steep channels protected by the ridges of Redentore. Owing to the water crisis caused by limited rainfall in recent years, the lake is in danger of drying out completely, and with it the small crustaceans native to the area will become extinct.



We continue our route, climbing from Forca Viola up the ridges of Redentore, with Castelluccio di Norcia, the Piana park and the colours of the blossom that paint a natural picture below us to the west. The wind accompanies us along the entire route, blowing constantly from west to east. It lashes the ridges as usual. In the Sibillini mountains it is certainly the dominant element.



We carry on to the new Zilioli lodge and then descend to Forca di Presta at sunset. After setting up in the lodge and having something to eat, we look up. The wind has blown away the clouds rising from the plain, and the sky is almost perfectly clear. The total lack of light pollution, with just a few dim lights twinkling in the villages below, makes it possible to admire the Milky Way with the naked eye. A natural sight that not everyone is lucky enough to witness. The Milky Way fills the celestial vault and dozens of shooting stars cross it, sometimes leaving very long trails.

## THE SIBILLINI MOUNTAINS ARE DEFINED AS MAGICAL BECAUSE IT IS ONE OF THE FEW PLACES IN THE WORLD WHERE THE RELATIONSHIP WITH THE ELEMENTS OF NATURE IS TRULY INTENSE.



PLASMA GTX® MEN'S



**PLASMA GTX® MS**  
DARK PIEDRA - TRUE MARE  
COD.: 112483 00 003

**PLASMA GTX® MS**  
SHADOW SAVANA - DUSTY FIENO  
COD.: 112483 00 004

• • • • •  
**Upper:** 1,6 mm WR nubuk leather  
**Lining:** Gore-Tex® Extended Comfort  
**Footbed:** C.A.S. Customizable - Hiking  
**Midsole:** Agile system; Dual Density EVA + TPU shank

**Outsole:** Vibram® Megagrip™  
**Weight:** 450 g (8 UK / 9 US)  
**Sizes:** UK 6 – 13,5 / US 7 – 14,5

PLASMA GTX® WOMEN'S



**PLASMA GTX® WS**  
DEEP LAGO - FRESH LAGUNA  
COD.: 212483 00 003

• • • • •  
**Upper:** 1,6 mm WR nubuk leather  
**Lining:** Gore-Tex® Extended Comfort  
**Footbed:** C.A.S. Customizable - Hiking  
**Midsole:** Agile system; Dual Density EVA + TPU shank

**Outsole:** Vibram® Megagrip™  
**Weight:** 380 g (5 UK / 7 US)  
**Sizes:** UK 3,5 – 8,5 / US 5,5 – 10,5

PLASMA MID GTX® MEN'S



**PLASMA MID GTX® MS**  
DARK PIEDRA - MIDWAY PIEDRA  
COD.: 112491 00 001

**PLASMA MID GTX® MS**  
DARK SAVANA - DUSTY CAMPO  
COD.: 112491 00 003

• • • •

**Upper:** 1,6 mm WR suede leather  
**Lining:** Gore-Tex® Extended Comfort  
**Footbed:** C.A.S. Customizable - Hiking  
**Midsole:** Agile system; Dual Density EVA + TPU shank

**Outsole:** Vibram® Megagrip™  
**Weight:** 510 g (8 UK / 9 US)  
**Sizes:** UK 6 - 13,5 / US 7 - 14,5

PLASMA MID GTX® WOMEN'S



**PLASMA MID GTX® WS**  
DARK SAVANA - CLOUDY LAGUNA  
COD.: 212491 00 001

**PLASMA MID GTX® WS**  
SHADOW PIEDRA - FRESH LAGUNA  
COD.: 212491 00 002

• • • •

**Upper:** 1,6 mm WR suede leather  
**Lining:** Gore-Tex® Extended Comfort  
**Footbed:** C.A.S. Customizable - Hiking  
**Midsole:** Agile system; Dual Density EVA + TPU shank

**Outsole:** Vibram® Megagrip™  
**Weight:** 445 g (8 UK / 9 US)  
**Sizes:** UK 3,5 - 8,5 / US 5,5 - 10,5



TECNICA

# CLASSIC COLLECTION



KILIMANJARO II GTX® MEN’S



**KILIMANJARO II GTX® MS**  
SHADOW PIEDRA - SOMBER MARE  
COD.: 112432 30 008

**KILIMANJARO II GTX® MS**  
SHADOW GIUNGLA - DUSTY CAMPO  
COD.: 112432 30 009

• • • •

**Upper:** 1,6 - 1,8 mm WR suede leather, tech nylon  
**Lining:** Gore-Tex® Extended Comfort  
**Footbed:** Premolded foam footbed  
**Midsole:** Die Cut EVA  
**Outsole:** Vibram® Adula 2, XS Trek  
**Weight:** 610 g (8 UK / 9 US)  
**Sizes:** UK 6 - 13,5 / US 7 - 14,5

KILIMANJARO II GTX® WOMEN’S



**KILIMANJARO II GTX® WS**  
MIDWAY DESERTO - SOMBER LAGUNA  
COD.: 212432 30 011

**KILIMANJARO II GTX® WS**  
DEEP LAGO - RICH LAGUNA  
COD.: 212432 30 012

• • • •

**Upper:** 1,6 - 1,8 mm WR suede leather, tech nylon  
**Lining:** Gore-Tex® Extended Comfort  
**Footbed:** Premolded foam footbed  
**Midsole:** Die Cut EVA  
**Outsole:** Vibram® Adula 2, XS Trek  
**Weight:** 550 g (5 UK / 7 US)  
**Sizes:** UK 3,5 - 8,5 / US 5,5 - 10,5



MAKALU IV GTX® MEN'S



**MAKALU IV GTX® MS**  
SHADOW PIEDRA - RICH LAVA  
COD.: 112433 30 019

**MAKALU IV GTX® MS**  
SHADOW GIUNGLA - DARK PIEDRA  
COD.: 112433 30 020

**MAKALU IV GTX® MS**  
RICH LATERITE - BLACK  
COD.: 112433 30 021

• • • •

**Upper:** 1,6 - 1,8 mm WR suede leather, fabric  
**Lining:** Gore-Tex® Extended Comfort  
**Footbed:** Premolded foam footbed  
**Midsole:** Die Cut EVA  
**Outsole:** Vibram® Adula 2, XS Trek  
**Weight:** 575 g (8 UK / 9 US)  
**Sizes:** UK 6 - 13,5 / US 7 - 14,5

MAKALU IV GTX® WOMEN'S



**MAKALU IV GTX® WS**  
MIDWAY PIEDRA - DARK PIEDRA  
COD.: 212433 30 024

**MAKALU IV GTX® WS**  
MIDWAY DESERTO - DARK DESERTO  
COD.: 212433 30 025

**MAKALU IV GTX® WS**  
DEEP LAGUNA - RICH LAGUNA  
COD.: 212433 30 026

• • • •

**Upper:** 1,6 - 1,8 mm WR suede leather, fabric  
**Lining:** Gore-Tex® Extended Comfort  
**Footbed:** Premolded foam footbed  
**Midsole:** Die Cut EVA  
**Outsole:** Vibram® Adula 2, XS Trek  
**Weight:** 490 g (5 UK / 7 US)  
**Sizes:** UK 3,5 - 8,5 / US 5,5 - 10,5



MAKALU II GTX® JR



**MAKALU II GTX® JR**  
BLACK - RICH LAVA  
COD.: 353158 00 001



**MAKALU II GTX® JR**  
TRUE LAGO - LIGHT PRATO  
COD.: 353158 00 002



**MAKALU II GTX® JR**  
SOMBER FIORI - BLACK  
COD.: 353158 00 003

• • • •

**Upper:** 1,4 – 1,6 mm WR suede leather, mesh

**Lining:** Gore-Tex® Extended Comfort

**Footbed:** Anatomic Tecnica

**Outsole:** Paw Kid – Vibram® XS Trek

**Weight:** 335 g

**Sizes:** UK 25 – 35 / 36 – 40





P.O.P. SOLUTIONS



**TOTEM MULTI TOOL FOOTWEAR**  
THE TOTEM COMES WITHOUT ANY GRAPHIC  
CODE: 45280U 00 001

**TOTEM GRAPHICS**  
MAGMA LOW: 45280T 00 001 (EN) / 002 (DE) / 003 (IT) / 004 (FR)  
MAGMA MID: 45280S 00 001 (EN) / 002 (DE) / 003 (IT) / 004 (FR)  
SULFUR: 452807 00 001 (EN) / 002 (DE) / 003 (IT) / 004 (FR)  
FORGE: 452808 00 001 (EN) / 002 (DE) / 003 (IT) / 004 (FR)

**TECNICA WALL/DESK DISPLAY**  
MAGMA LOW: 452821 00 001  
MAGMA MID: 452821 01 001  
SULFUR: 452821 02 001  
FORGE: 452821 03 001

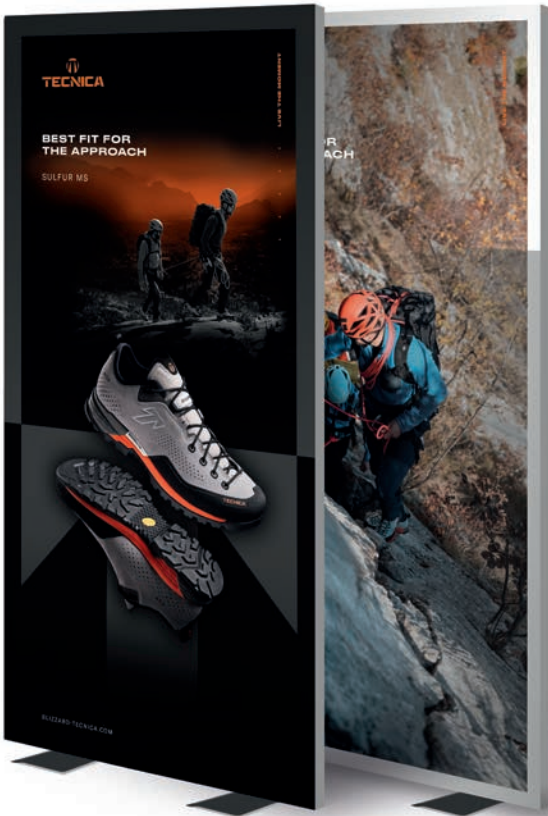


**FLOOR STAND**  
40 x 160 CM  
(WITHOUT GRAPHIC)  
CODE: 45280L 00 001



**FLOOR STAND GRAPHICS**  
MAGMA LOW: 452822 00 001  
MAGMA MID: 452822 01 001  
SULFUR: 452822 02 001  
FORGE: 452822 03 001

**ALU FRAMES**  
THE ALU FRAME COMES WITHOUT ANY GRAPHIC  
80 x 200 COD: 45280V 00 001  
100 x 200 COD: 45270W 01 001  
150 x 200 COD: 45280W 00 001



ALU FRAME GRAPHICS

MAGMA LOW	MAGMA MID	SULFUR	FORGE
80 x 200 COD: 452810 00 001	80 x 200 COD: 452809 00 001	80 x 200 COD: 452811 00 001	80 x 200 COD: 452812 00 001
100 x 200 COD: 452810 01 001	100 x 200 COD: 452809 01 001	100 x 200 COD: 452811 01 001	100 x 200 COD: 452812 01 001
150 x 200 COD: 452810 02 001	150 x 200 COD: 452809 02 001	150 x 200 COD: 452811 02 001	150 x 200 COD: 452812 02 001





**TECNICA CUBE FTW**  
CODE: 452813 00 001



**TECNICA CARPET FTW**  
50 x 80 CM  
CODE: 452814 00 001



**TECNICA ENDLESS BANNER FTW**  
CODE: 452818 00 001



**TECNICA INDOOR FLAG FTW**  
2,2 M  
COD: 452816 00 001



**TECNICA OUTDOOR FLAG FTW**  
5 M  
COD: 452817 00 001



**TECNICA TENT 5 x 5 MT FTW**  
CODE: 452819 00 001



**TECNICA INFLATABLE POUF FTW**  
CODE: 452820 00 001

## SIZE TABLE

EU	35	35½	36	36⅔	37½	38	38⅔	39½	40	40⅔	41½	42	42⅔	43⅓	44	44½	45	45⅔	46½	47	47⅔	
UK	2.5	3	3.5	4	4.5	5	5.5	6	6.5	7	7.5	8	8.5	9	9.5	10	10.5	11	11.5	12	12.5	
US MEN								7	7.5	8	8.5	9	9.5	10	10.5	11	11.5	12	12.5	13	13.5	14
US WOMEN		5	5.5	6	6.5	7	7.5	8	8.5	9	9.5	10	10.5									

•  
•  
•  
•  
•

45280600 002 TEC. FOOTWEAR CAT. SS23 EN



TECNICA GROUP S.P.A. VIA FANTE D'ITALIA 56,  
31040 GIAVERA DEL MONTELLO (TV) ITALY

DATE OF PRINT: MAY 2022

BLIZZARD-TECNICA.COM